

Roubidoux Spring, 4 miles of trout water



The Gasconade meanders thru gorgeous splendor



Caves to explore

WAYNESVILLE MISSOURI PHONE 41

GASCONADING

The Gasconade, Roubidoux, Piney river area is rich in legend and historical events because growth and development have depended entirely on natural resources. Once it was a paradise for the wild creatures of the forest and streams and the happy hunting grounds for the Indians who lived by the skill of the hunt. Then came the white trappers, followed by the covered wagon with those who would build a home. By 1831 the present U. S. Highway 66 was well established as the "Old Kickapoo Trace", only to be known later as the "Wire Road" because it was paralleled by the only telegraphic communication between St. Louis and Springfield.

Settlements grew around the springs which are so numerous in the area. Water mills were built with turbines or overshot wheels to harness the power with which to grind the grains for food. Timber was cut and rafted as logs or railroad ties down the rivers, farms were carved out of the alluvial valleys and uplands. Then came the Civil War and a fort was built at Waynesville to protect the region from bushwhackers, and to preserve a military communication line on the "Old Wire Road". The late Dr. Bland N. Pippin, founder of PIPPIN PLACE, as a boy rode horseback on top of a sack of shelled corn to Bartlett's Mill from his home, some eight miles distant. He dreamed, as boys will do, of the time when this spot would be his.

And so it was, for in 1911 he bought the spring and mill and forty acres of land and his dream came true, as in 1914 the first section of PIPPIN PLACE came into being. Guests rode the Frisco trains to Crocker, Missouri, and completed the trip by horse and buggy.

Then came the Model T and in 1918 another section of PIPPIN PLACE was completed.

As the years went by, PIPPIN PLACE kept time with progress, continued to improve and today, still under PIPPIN management practices the principle of service, hospitality, and courtesy that have so well established it for over 40 years.

The dictionary defines a Gasconader as a braggart, one given to boastful talking, so if we seem to be boasting in this booklet, please excuse us, it is a part of our heritage. All we ask is a chance to show you PIPPIN PLACE, then, you too might become a Gasconader.

Dru and Eva Pippin, Managers.

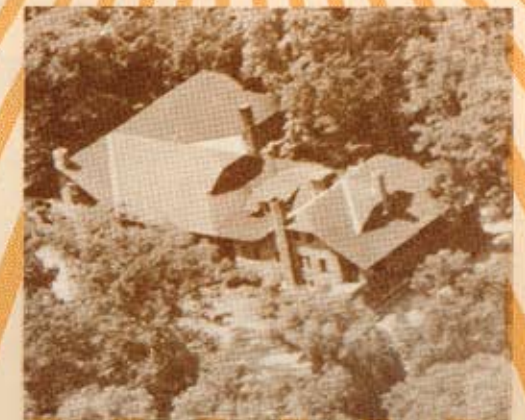
HOSPITALITY IS A TRADITION



PIPPIN PLACE



Ozark Beauty At It's Best



Accommodations by reservations only.
Year Round Recreation.



Hardwood, dogwood and lazy blue Eddies



I look my best when the trees are green
When the leaves are off, I'm better seen



Section of Recreation hall



"John", Dean of Chefs

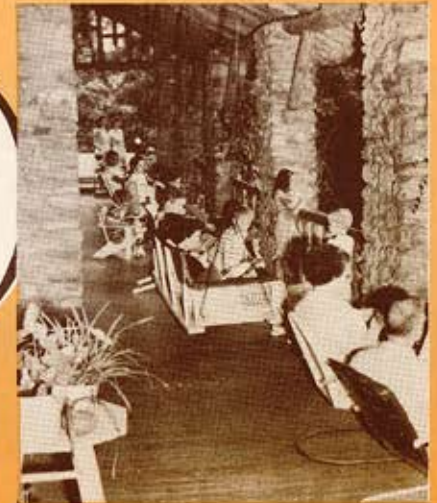
PIPPIN PLACE is about 140 miles southwest from St. Louis and five miles from Waynesville which is on U. S. Highway 66, State Highway 17 and U. S. Skyway No. 1. Waynesville itself is a county seat town with 1200 friendly people, modern facilities, hospitals and health ordinances, and a hard surfaced airport. It is bisected north and south by a rainbow trout stream.

PIPPIN PLACE is a modern resort hotel, secluded in the timbered hills of the Ozarks, built on a plateau above the river banks of the Gasconade River. It is of native rock construction, modern in all respects, and catering to people of known character. The rooms are large, comfortable, cool in the summer and warm in the winter. It has a large recreation hall, and two lounging rooms for reading or relaxation. PIPPIN PLACE is operated American plan, and meals are served in a first floor dining room and porch, being prepared by JOHN our colored Chef who is oft' times called "Dean of Chefs"; his service at PIPPIN PLACE having started in 1918.

Rooms may be had, with or without bath, with single or double beds. It is necessary to make reservations well in advance, accompanied by a deposit. The atmosphere is best described as a big happy vacation family enjoying recreation in an informal way, yet having the comforts of home plus wholesome foods prepared by an artist.

For recreation, the 550 acres of river and adjacent lands, offer you fishing, boating or swimming, hiking, tennis, horseshoes, or badminton, painting or photography, while inside you can play ping pong, cards or checkers, dance or sing or just choose a book from our book of the month library, get an easy chair and lose yourself in the land of make believe.

We invite your inquiry from our hundreds of enthusiastic friends.



Just Loafin'



And still the wonder grew what else a channel cat could do.



It isn't my fault if you can't hit 'em



Hard surfaced, modern airport, Waynesville, Mo.