

THE COMING OF FORT LEONARD WOOD

Newspaper articles from St. Louis before America joined in the war effort in World War II announced the coming of Fort Leonard Wood. One article stated,

"A remote section of the Ozarks is feeling acutely these days an effect of the European War. As part of the United States defense program, occasioned by that war, the Government is establishing in Pulaski County, Missouri, an army training center, and the lives of many people of the region are beginning to be

directly affected by the enterprise. About 200 families living in the area the training center will occupy will have to move; their land is being bought now by agents of the United States Forest Service. Owners of office space in Rolla, 30 miles away, have been leasing it for the use of War Department officers and agents until buildings for them have been erected at the cantonment. Merchants of nearby towns are preparing for a substantial

increase in business, and many men of the region are expecting to get jobs on the construction project. The training center, for the Seventh Corps Area, will occupy some 68,000 acres of tableland and wooded hills in the Big Piney River country, between United States Highways 63 and 66.

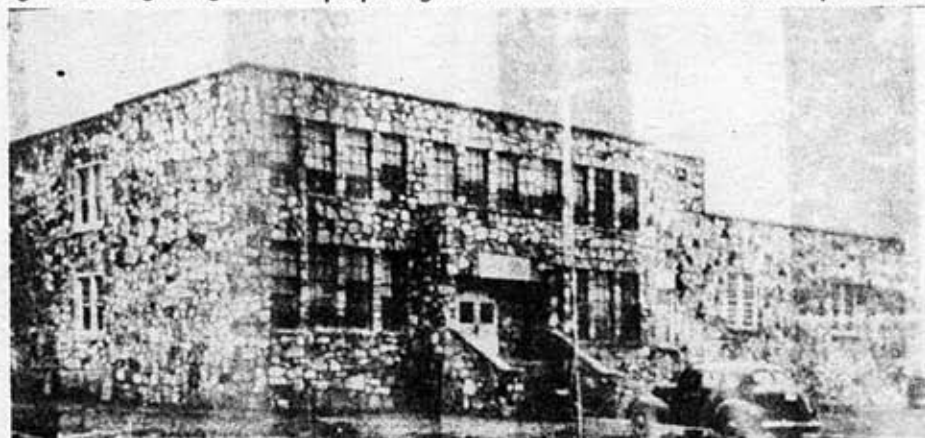
The central point of the site is the post office of Tribune, on State Highway 17, about 12 miles southeast of Waynesville and 30 miles southwest of Rolla. A considerable part of the

site lies in the Gasconade unit of the Mark Twain National Forest. The center is expected to accommodate 32,000 enlisted

men and 1200 officers. The first military buildings in a construction program expected to cost about \$8,400,000, will be ready for

use, army officers hope, by February 1.

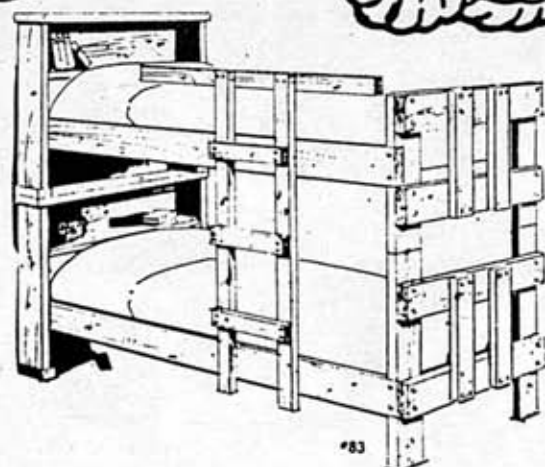
Buildings planned include 434 barracks, 141 mess halls, 14 post ex-



The largest building in the area taken over by Fort Leonard Wood, this modern two-story structure, built of native rock, was completed a year before it had to be torn down. Once the building was cleared away it was expected to be a rifle range area.



Uncle Sam's post office representative at Bloodland, located in Scott's Grocery was originally a bank building, this two-story brick structure was on the site where the community's first little store was located 99 years ago. The community eventually grew to be the biggest in the immediate area, being the largest of the four towns to be swept off the map.



#83
"Bookcase" Bunk Bed
2" x 6" All Pine Construction
2" x 6" Wood Rails
Ladder/Guard Rail Combo
"High Gloss" Spanish Oak Finish
"Stackable" (Twin Beds)

Complete With 2 Promo Mattresses

ONLY \$299⁹⁵

Twin Set \$109⁹⁵
Full Set \$119⁹⁵
Queen Set \$179⁹⁵



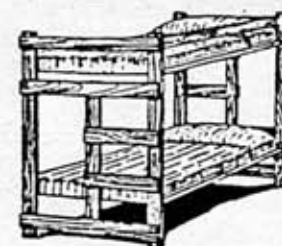
Dream Lite
252 Coil; Polyester Knit Cover
Felt Insulator Pad
Polyurethane Foam Padding
Multi-Needle Quilt (One Side)
Deluxe (7½") Foundation with Quilted Border.

COMPLETE LINE OF
BUNKBEDS &
MATTRESSES

LYNCH'S Furniture & Appliance
St. Robert's ½ Acre Store
336-3312

No. 1980
2" x 4" All Pine
Construction Complete
With 2 Promo Mattresses

ONLY \$169⁹⁵



Bunkie Mattresses

Promo \$54⁹⁵
Deluxe Promo \$64⁹⁵
2 pc. Foam \$94⁹⁵
2 pc. Interspring \$104⁹⁵



Dream Way
312 Coil; Polyester Knit Cover
Felt Insulator Pad
Polyurethane Foam Padding
Multi-Needle Quilt (Both Sides)
Deluxe (7½") Foundation with Quilted Border.

Twin Set \$119⁹⁵
Full Set \$139⁹⁵
Queen Set \$199⁹⁵

changes and two theatres.

The February 9th, 1941 St. Louis Globe Democrat featured a photo story on four towns that had to move to make way for Fort Leonard Wood. Bloodland, Palace, Tribune and Cookville were all destroyed in the move.

The Bloodland Grade and High School, the largest building in the area was a modern two-story structure, built of native rock, completed only a year before, in 1940. A rifle range was expected to take its place. Bloodland's largest filling station and only motor car company,

junction. A modest appearing store housing a post office and grocery represented the entire business district of Tribune, described as hardly more than a wide stretch in the road off Highway 17. Occupied for 13 years, the owners expected to be out by March 1, 1941.

Although Bloodland Methodist Church was destroyed, the cemetery remains intact today...surrounded by a fence. Bloodland residents traded for 25 years at the R.R. Hicks general store. Its silver anniversary also marked its demise. Some

to go out of business due to the establishment of the camp was operated by Vaughn and Son, owners of a considerable amount of Bloodland's property. The store dispensed general merchandise. Scott's Grocery in Bloodland was originally a bank building. The two-story brick structure was on the site of the community's first little store 44 years before. Bloodland was the largest of the four communities to be swept off the map.



Customers of Brown Brothers' Grocery, many of whom had been trading in the store during the 40 years it occupied the northwest corner at the junction of Highway 17 and E, had to stock up on provisions and other necessities from another source once the army forces moved in en masse.

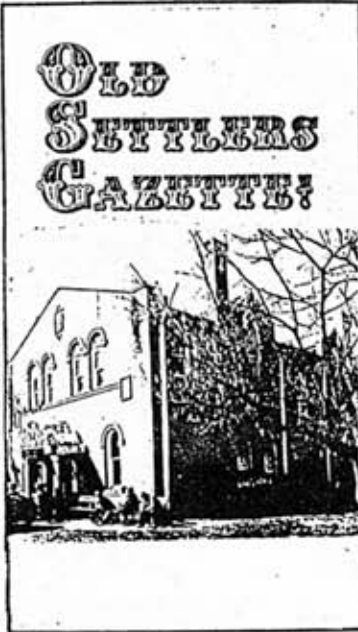
FOUR OZARK TOWNS WERE WIPE OFF THE MAP TO MAKE WAY FOR FORT LEONARD WOOD!

Vaughn Motors, was blotted out. During the camp construction work, many of the stores were doing a thriving business by converting their establishments into temporary lunchrooms.

Brown Brothers Grocery operated for 40 years at the northwest corner of the Highway 17 and "E"

families expressed an intention to move to Springfield, others to nearby Rolla. Some 50 families scattered over the farmland around Palace used a general store and post office on Highway 17. Palace was located near the center of Pulaski County.

One of the largest stores



This post office was located at Tribune, right in the center of where Ft. Wood now exists!

CINDERELLA LAUNDRY & CLEANERS



Alterations
Name Tags

**SAME DAY
CLEANING
SERVICE**

DON & PAT WOODMAN

Owners

Bus. Rt. I-44 Next To IGA
St. Robert, Mo.

314-336-3319

**United
Savings & Loan
Association**

HIDDEN VALLEY PLAZA
ST. ROBERT, MO



Insured to \$100,000

DRIVE IN HOURS —

8:00 AM

7:00 PM -

MONDAY — FRIDAY

LOBBY HOURS

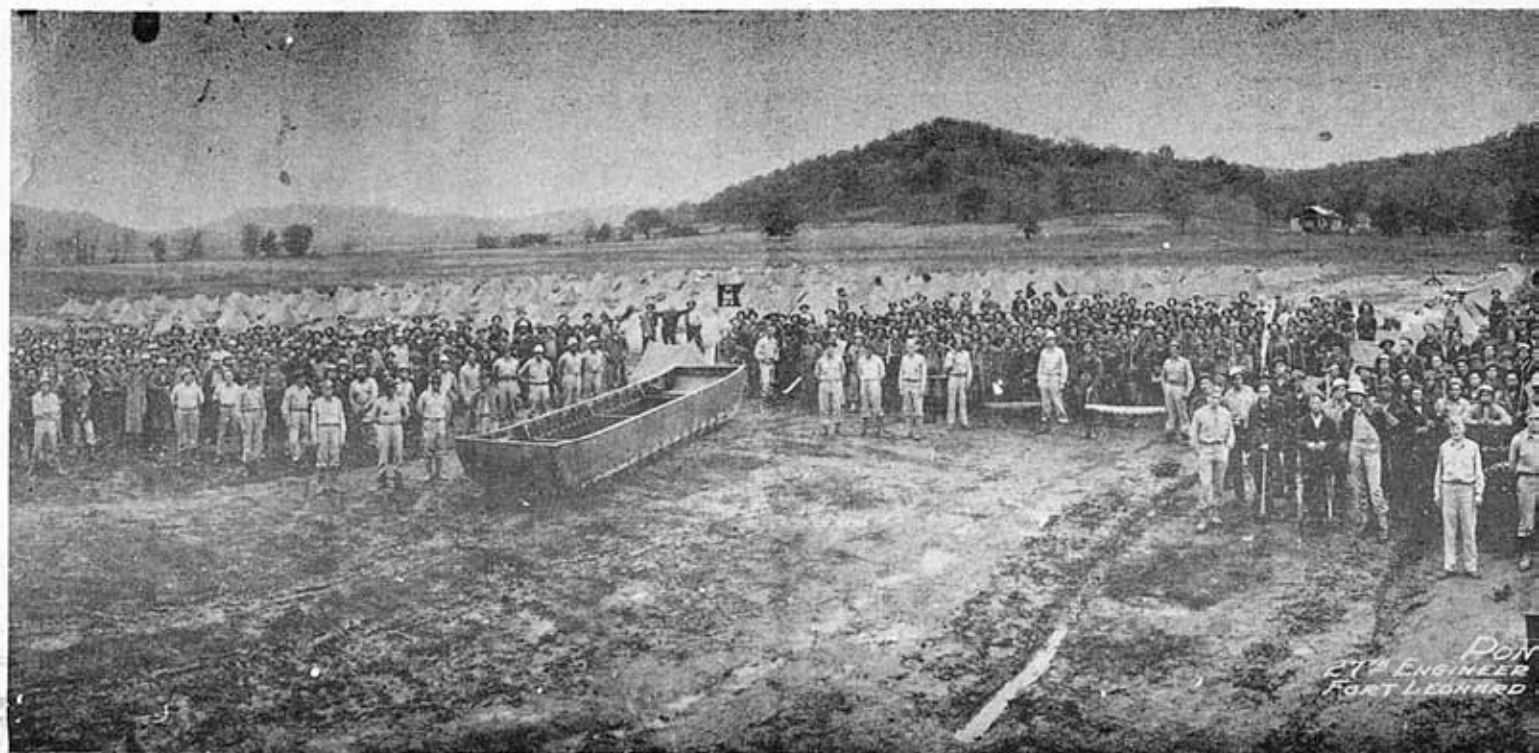
8:00 AM

4:00 PM -

MONDAY — THURSDAY

LOBBY OPEN UNTIL 6:00 ON
FRIDAYS AND UNTIL 12:00
ON SATURDAY.

FORT LEONARD



This picture shows the 27th Engineer Training Battalion Pond. The Ozark countryside is virtually un-

Introduces the

Lumber Camp Triangle



The ice cream shop is owned by David and Linda Donaldson.

The triangle hails from the Davey Ward Lumber Camp—Headwaters of the Manistique River, Kalkaska, Michigan from the early 1900's. It was made from a Log Skid Runner.

Rung Dally—The 1st person hearing the triangle and enters the store will win a Free "Big Scoop" Cone of Ice Cream!

People also seem to enjoy the fresh fruits and the fresh roasted walnuts and pecans." The local ice cream company buys as much fruit as possible from local organically-minded farmers.

The store will increase the menu soon to include homemade breads and deli sandwiches. In the fall they plan to introduce a more complete line of home cooked foods.

Future plans also call for an old fashioned Moses Johnson General Store and candy counter. It will be combined with an antique shop.

In the upstairs portion of the building plans are slated for monthly auction sales, monthly teen dances, bluegrass and country western concerts and a craft show planned for sometime next summer.

I also wanted a place display my antique collection and the old fashioned homemade ice cream and the antiques seemed to compliment each other. Donaldson has been collecting antiques for 25 years and most of his collection is of general store relics.

Where did you get the name for the store?

"Well, Moses Johnson was my great grandfather. I have several antiques which belonged to the Johnson family and I've always wanted to have a store named after him."

And if Howard Johnson could be successful with ice cream I figured Moses Johnson could be too," concluded Donaldson.

Moses Ice Cream

"Home of the

[Main Street]

Made Fresh Daily

As Many As Available

Tacos
Taco Supremes
Nachos
Tostada Salad
Crisp Garden
Patch Salad

Deli Sandwiches
on Homemade Bread

Offering

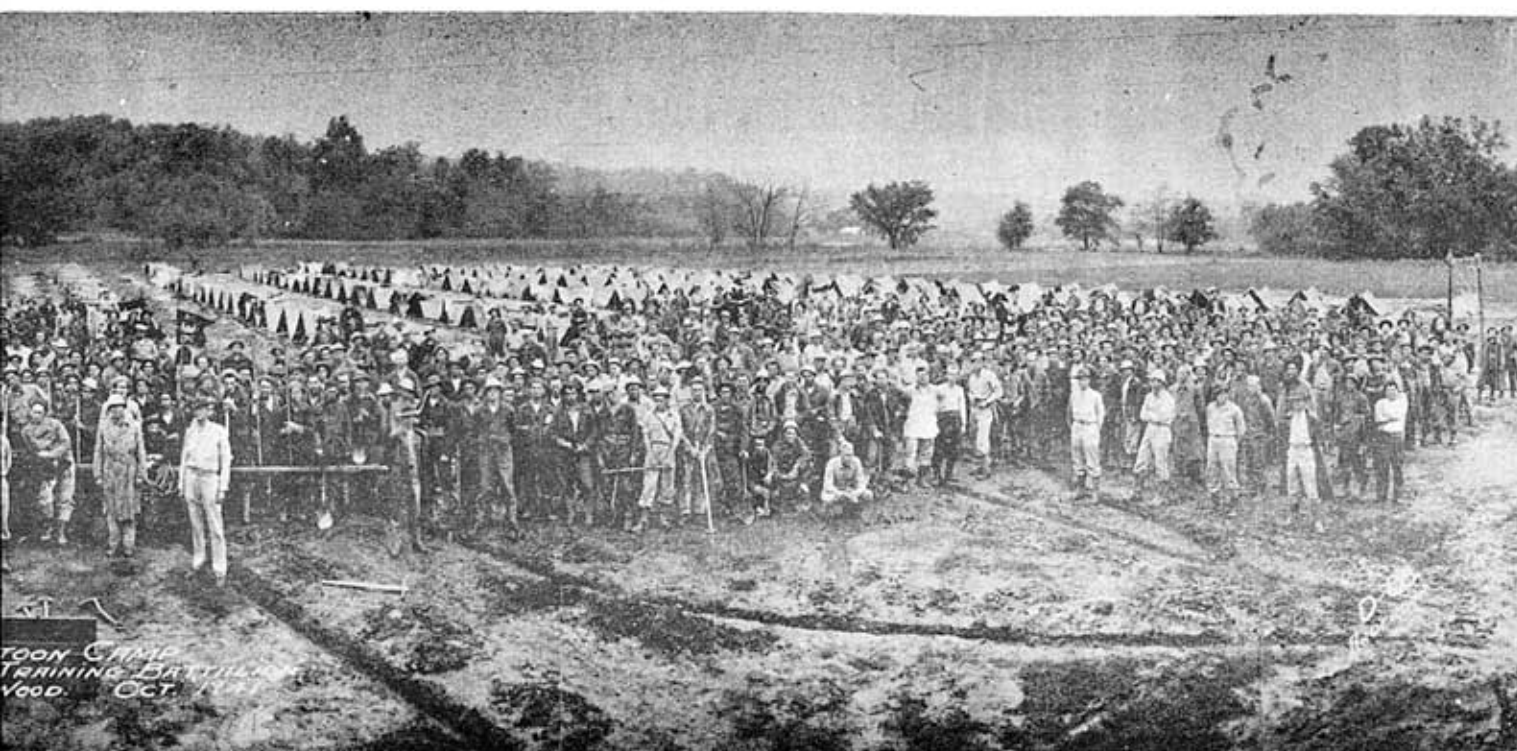
—All Fresh Fruit Toppings
—Fresh Home Roasted
Pecans & Walnuts
—Real Whipping Cream

★ GASCONADE GRAPE
★ LEMON CUSTARD
★ PINA COLADA
★ OZARK SUNSET SHERBET
★ MISSOURI BLACK WALNUT
★ CLIFTY CREEK CRUNCH
★ GRANNY'S APPLE PIE
★ COOKIES & CREAM
★ TABLE ROCKY ROAD
★ M & M HIGHWAY
★ BANANA NUT
★ BLACKBERRY PIE

★ ORANGE PINEAPPLE

Sundaes &

ARD WOOD



toon Camp just months before the bombing of Pearl Harbor.
marked in the early days of the Fort.

(Photo courtesy of Alan Duff)



Johnson
am Co.



Big Scoop"

et Dixon]

ily In The Store

s 50 Flavors
lable

Fountain Drinks Include
Frosty Mugs of A & W Root Beer

Hours: 10:30 a.m. - 10 p.m.
Phone 759-6914
(7 Days A Week)



Banana Splits



In Commemoration of a 1931 Fight

The Story...

A huge crowd packed into the upper floor of the Legion Building for the main wrestling match between "Doc" Williams and John Spurgeon of St. James. Williams weighed 175 lbs. but his opponent weighed 220 lbs. which Williams did not know until the evening of the fight. "My friends were here and the house was full. The people had paid their money so we had to wrestle," commented Williams.

Williams took an awful beating that night. He broke his foot and two ribs in the brawl.

In memory of the match and the renovation of the Legion building "Doc" Williams presented the original wrestling poster to David Donaldson, owner of the Ice Cream Company. The date of the wrestling match was March 10, 1931.