

LACLEDE COUNTY: THE EARLY YEARS!

Reprinted By
Permission Of The
Lebanon Daily Record
By Kirk Pearce

Early in the Spring of 1820 Jesse Ballew came westward, crossed the Gasconade River and settled near where the Hazelgreen Bridge spans that river today. He was the first white settler to settle in what is now Laclede County. Ballew still has descendants in Laclede County today.

A short time later, Henry Anderson, another daring pioneer, settled just across the river from Ballew, followed by William Montgomery, who erected a cabin a few miles downstream. Settlers then began coming thick and fast. As early as 1836 the land in this region was surveyed and

groups, often one or two families with their household goods piled on ox-drawn wagons, settling chiefly in the fertile little valleys along streams and creeks.

The first ones to take advantage of the homesteading were Abraham Munholland, John Tucker, Robert Montgomery, D.B. Laxton, Benjamin Moore, William Maxey, John Honssinger, Robert Farris, Moses Bean and W.P. Wisdom. There are

By the 1840s substantial settlements had grown up along the Gasconade and Osage River, Bear Creek, Brush Creek, Dry Glaize, Goodwin Hollow and Cobbs Creek, with a few scattering farms between.

The earliest settlers in and around Lebanon were

William Smith and Samuel W. Barnes were elected judges of the county court; John S. Shields, sheriff, and John L. Herndon, clerk of the county court.

On Oct. 1, 1849, the first day of the term of the circuit court, a majority of the commissioners went before

by James M. Appling and wife. The site for the town was surveyed out into lots, blocks, alleys and streets, and named Lebanon, after Lebanon, Tenn.

was once called "Wyota" by the Indians?

Benjamin B. Harrison, who gave a great part of the land for the original town-



sectionized, thus making it possible for land entries to be made within 16 years after the coming of the first settler. These early settlers came mostly from North Carolina, Tennessee and Kentucky, sometimes in

still descendants of these early settlers in the county today.

The first mill of any sort to be erected in the territory known as Laclede County today, was built in 1825 by Robert Montgomery.

James Jolley, John T. Cooper, William A. McPhail and Lauckland Murphy.

Laclede County was organized in February 1849 at the house of L. Murphy. An election was held in April of that year. Robert Farris,

the judge of the circuit court and reported the donation of 50 acres of land for the location of the county seat of Laclede County. Forty-one acres of this land were given by Benjamin B. Harrison and wife, and the other nine

The contract for the first courthouse in Laclede County was let to A.S. Cherry in May 1850. The county was named in honor of Pierre Liguist Laclede, the founder of St. Louis. Did you also know that Lebanon

site, was the first merchant in Lebanon, having opened his store about two years before the town was established. About the year 1857 J.W. McClurg, later governor of Missouri, and a merchant at Linn Creek,

Furniture World All-Out SIDEWALK SALE

INSIDE...SPECTACULAR!
Our regular everyday low
prices plus **NO FINANCE CHARGES!**

**FRIDAY & SATURDAY,
JULY 25th & 26th**

We're going all-out to give you furniture bargains! Starting at 9 am Friday, our sidewalk will be filled-up with furniture marked-down to incredible low prices! Factory closeouts! Floor samples! Discontinued items! More values than we have room for outside the door, so you'll find even more in the store! Get here early for your chance to walk away with great bargains!

**PLUS! INSIDE THE STORE...
YOU'LL GET SIX MONTHS
FREE FINANCING*
ON ANY PURCHASE YOU MAKE!**

*With approved credit and a minimum down payment.

**Furniture
World**



MON.-FRI. 9-6
THURSDAY 9-8
SATURDAY 9-5

CONVENIENT CREDIT PLAN

699 S. Monroe

417-532-9638

Lebanon, Mo.

OUTSIDE...FANTASTIC!
Incredible discounts on
top of more discounts!



opened a branch store in Lebanon. There were four stores in Old Town when the Civil War began. Lebanon was then a small place, but a great deal of business was carried on there.

The Civil War had much impact on Laclede County. Lebanon was very isolated at that time since it was 100 miles from railroad or telegraph. Both North and South were represented among the residents of this section. Many of the early settlers were from Kentucky, Tennessee and the Carolinas and there were many slave owners among them. There were also pioneer settlers from New England and the northern states. Feeling was intense and many once good friends and neighbors became bitter enemies during the war. Troops from both North and South passed over the old Wire Road and old timers in Lebanon have told of occasions when the army of one side came into town very shortly after the army of the other side had left, going in the opposite direction.

Bushwackers also made frequent raids in the section and terrorized the people. More than one good citizen incurred their enmity and was shot or hanged by them.

After the close of the war, business immediately began to revive in Old Lebanon. Some of the business places

at that time were Wallace Brothers General Store, H.P. Crane, Joe Fisher's Restaurant, Rubey & Ivey, Serl's Drug Store, Worthington's Store, Norman's Drug Store, Bradley & Hartmiller, a hardware, a bank, Cushwah's General Merchandise, Steinberg's and two hotels or taverns. The Old Academy was the first school in Lebanon.

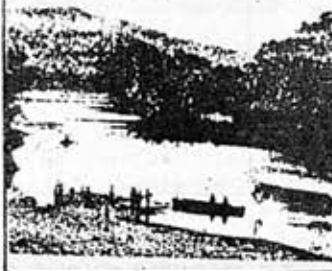
The next great epoch in the history of Laclede County occurred in the summer of 1869 when the railroad, spanning the entire nation, passed through the very heart of Laclede County from northeast to southwest. The railroad was completed so that the first passenger train ran into Lebanon Oct. 20, 1869. This first train was greeted with intense joy. A great celebration was held in honor of the event-bands played and speeches were made. Lebanon was for some time the terminal of the railroad.

Failure of the town council at that time to donate to the railroad the land it requested caused the station to be established three quarters of a mile out on the muddy prairie at that time, the railroad missing the town a quarter of a mile. The inevitable happened. Businesses immediately moved to the new addition, which was laid out parallel

to the railroad and in a couple of years a new business center grew up and Old Town became simply the first ward of new Lebanon. There were no brick buildings in Old Town, but with the removal to the present location, most of the business places were built of brick. Even the location of the cemetery was changed from Old Town. When the cemetery was moved, only three bodies were moved, that of a man, a woman and a little child.

The old courthouse was sold in 1870 and offices were moved to the new town. A new courthouse was constructed in 1894. This grand building was destroyed by fire in 1920, and afterwards the present one was constructed.

OLD
LEBANON
GAZETTE



This edition of the Laclede County Courthouse was built in 1894. Its life, however, was short. The grand building was destroyed by fire around 1920. (Photo courtesy of Kirk Pearce)

DID YOU KNOW...

Comedian Jerry Clower mentions visiting
Waynesville, Missouri on his album,
"Jerry Clower-Starke Raving!"



YOUR FLOOR STORE SINCE 1972

FALCON FLOOR COVERING INC.

ONE OF MID MISSOURI'S
LARGEST CARPET DEALERS

"OUR LARGE SHOW ROOM FEATURES

MANY, MANY ROLLS OF CARPET & VINYL TO CHOOSE FROM
ALSO THOUSANDS OF SAMPLES TO CHOOSE FROM

• BIGELOW • MOHAWK • HORIZON
• CALLAWAY • PHILADELPHIA • GULISTAN
AT A PRICE YOU CAN AFFORD

* CERAMIC
TILE

* HARDWOOD
FLOORING

* VINYL
FLOORING

PROFESSIONAL INSTALLATION AVAILABLE

Call

532-3118

109 E. COMMERCIAL
LEBANON, MO



STONEGATE STATION

Adults: \$5.95.

Children 5-10 are
25¢ for each year
of age under 2 years
of age FREE!

Naturally
You May
Order From
Our Dinner Menu!

Our Sunday buffet always has a little something "EXTRA"

Big On Breakfast.

Large On Lunch.

Super On Supper.

Served
11 A.M. to 3 P.M.

Plus...

Our famous Salad Bar

NEW HOURS:

6 AM - 10 PM Friday and Saturday
6 AM - 9 PM Sunday - Thursday

Located At the Intersection
of Hwy. 5 & Hwy. 32
telephone 588-1387

Sportswear
Coordinates
Lingerie
Swimwear

TESS

That Extra Size Shop

Forum Plaza
Mon-Sat 9-9
364 7666



Belts
Earrings
Necklaces
Accessories

Lee Jeans
Levi Bendovers
Barry Ashley
Miss Russ

Catalina
Robby Len
Nancy Frock

Sizes:

Lady Devon
Cherry Hill
Orweco
Ample Tog

Blouses 36-52
Jackets 36-52

Pants 32-46
Skirts 32-46