

Wharton Store And Postoffice

By Pearl Brown Wilson

The first Wharton, Missouri, U. S. Postoffice was operated by a Mrs. Wharton, who lived with her two sisters in a little log cabin. But illness forced her to resign her postmistress position.

She was succeeded by M. D. Brown, who had a store of general merchandise. He was commissioned March, 1910, as the new Postmaster.

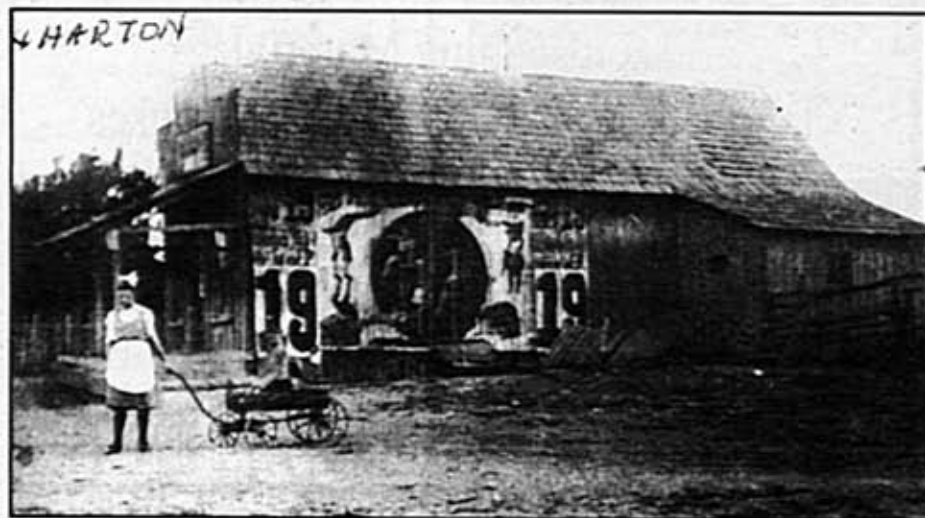
Shortly thereafter, Brown moved the postoffice into his store.

His home was nearby and was situated in Township 35, Section 20, Range 11 West of the Fifth Principal Meridian. The land on which it was built had been acquired under the Homestead Act. The site is now a part of Fort Leonard Wood.

During the early 1930's, the government closed many of its fourth class postoffices. Wharton fell victim to this, making it imperative that Mr. Brown seek another source of income. He filed for Judge of the Probate Court in Pulaski County in 1934 and won. Judge Brown served in this capacity until his death August 18th, 1950.

He had just won the August primary and had no Republican opponent for the November General Election.

The late Judge R. A. Bell was appointed to fill the vacancy. Bell wrote a tribute to Judge Brown, which is spread upon the Probate Court Records in Pulaski County.



SIDE VIEW OF WHARTON STORE AND POSTOFFICE. The young girls posing for the picture are Bessie Brown Hamilton and Pearl Brown Wilson. The big sign on the side of the store told about a circus that was coming to Bloodland on September 19th. (Photo supplied by Pearl Wilson).

FRONT VIEW OF WHARTON STORE AND POSTOFFICE. Picture taken around 1913. (Left to right)—Jennie Courson LaFleur, Elva Brown holding Pearl Brown Wilson, Arlo Brown, Bessie Brown Hamilton, Virgil Brown, Henry Williams, Ben Williams, Ray Williams, Ervin Brown, Ray Brown, and M. D. Brown. (Photo supplied by Pearl Wilson).


Divine Detail
 Cars - Boats - RVS
 Vans - Machine Buffing
 Interior Shampooing - Hand Wash
 Hand Wax - Engine Cleaning
 313 Historic 66W
573-774-6700
 Randy Grimm - Owner

Oakwood Cafe
 Daily Lunch Specials ~ Breakfast Anytime
 ~ Homemade Shakes
 ~ Malts Sundaes
 ~ Hand Dipped Ice Cream

 **Old Fashioned 6 1/2 Oz. Coca-Cola Bottle**
 Bus. Rt. 1-44
 (Next to St. Robert Post Office)
 HOURS: Mon. - Fri. 6-3 ~ Sat. 6-12
573-336-2224



Lebanon Bible & Book Store
 200 W. Commercial • Box 991
 Lebanon, MO 65536
 (417) 532-9516
Your Christian Supply Headquarter
BOOKS • BIBLES • MUSIC
CHURCH SUPPLIES

DIXON CHURCH OF CHRIST
This church exists to make Christ known and to equip His people for works of service.
573-759-2236
 DIXON, MISSOURI 65459

Patterson COMMERCIAL • RESIDENTIAL
 CARPET & FLOOR COVERING
NAME BRAND CARPET & VINYL
 WE BUY MILL DIRECT TO PASS THE SAVINGS ON TO YOU!
Level Loop starting at 3.99 Sq. Yd.
 M-F 9-5:30
573-759-7012
 213 West 2nd Street
 Dixon, Mo
 MASTERCARD & VISA